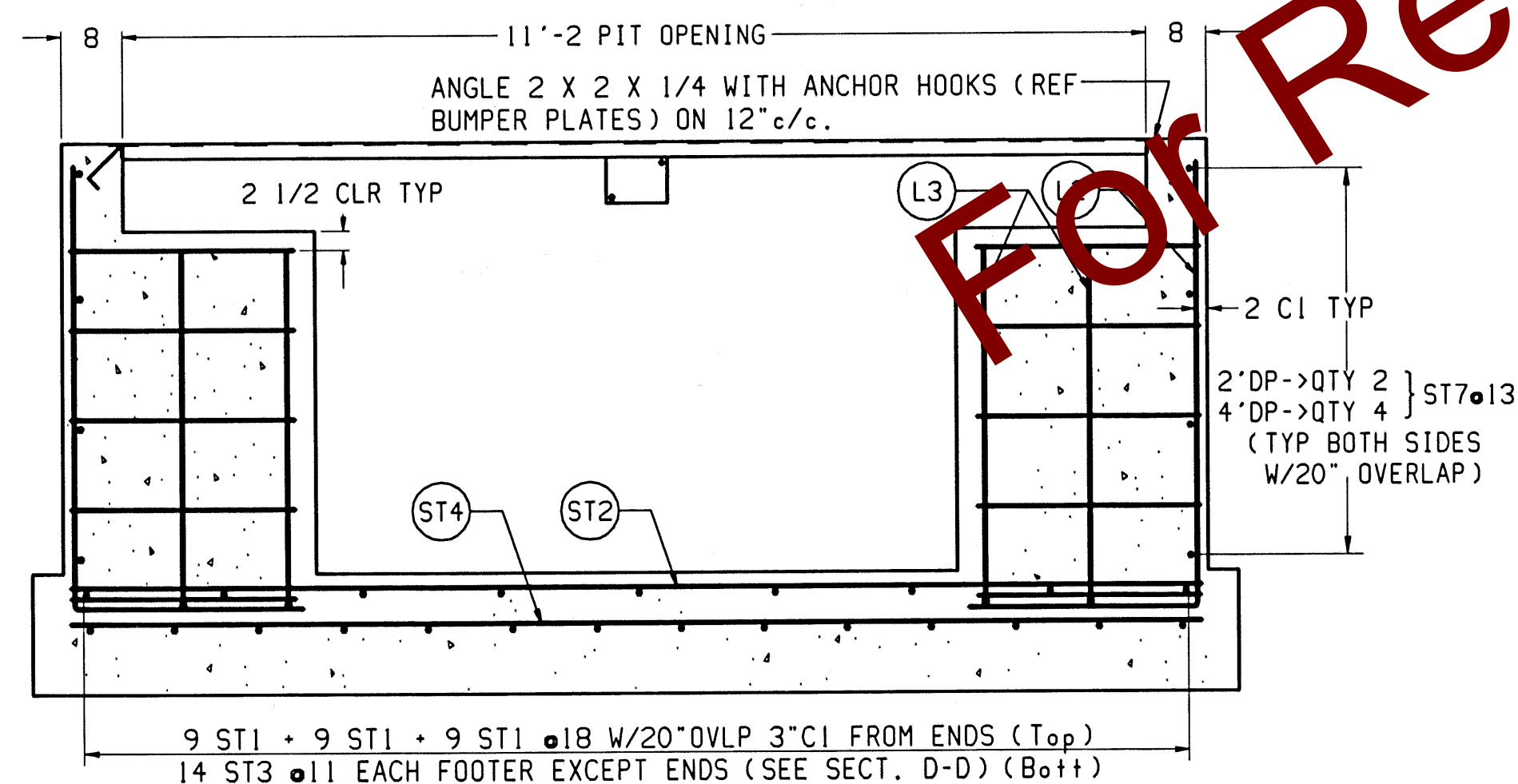
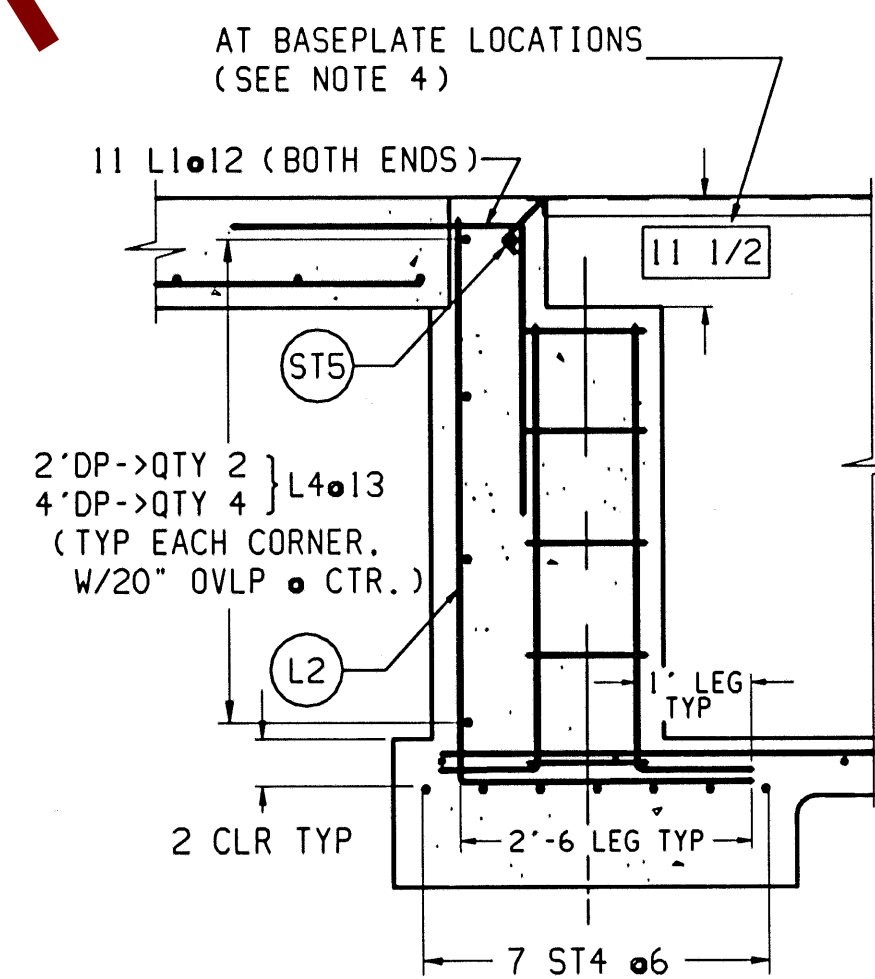


DETAIL "L"
SCALE: 1:8
EXPANSION BOLT LOCATIONS
(OTHER SIDE IS OPPOSITE)

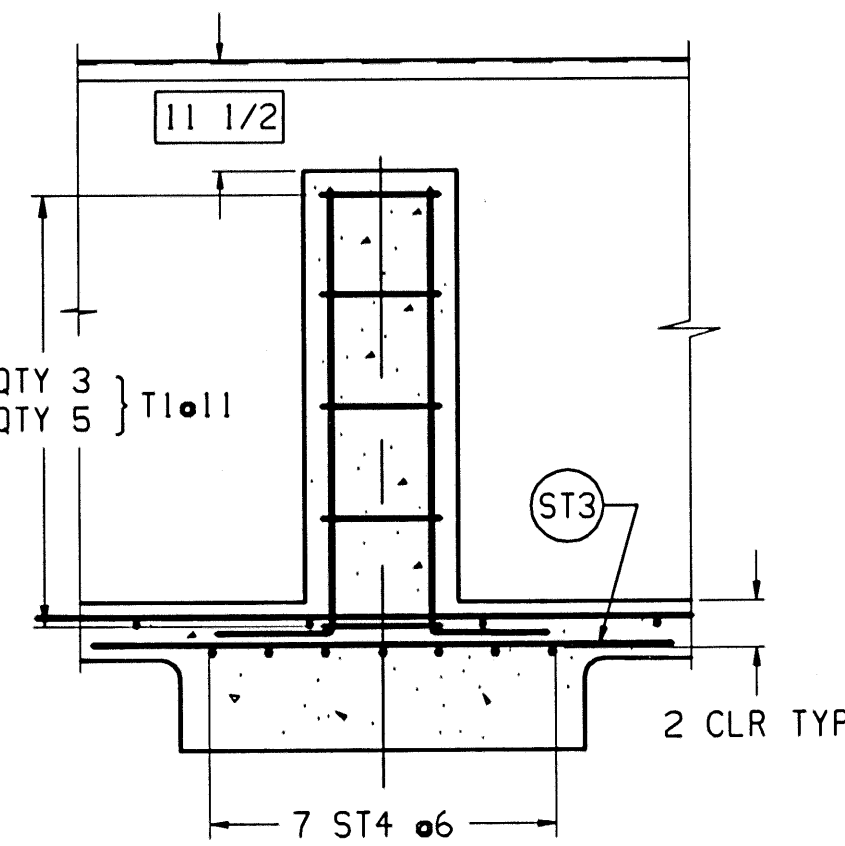
DETAIL "K"
SCALE: 1:8
EXPANSION BOLT LOCATIONS
(OTHER SIDE IS OPPOSITE)



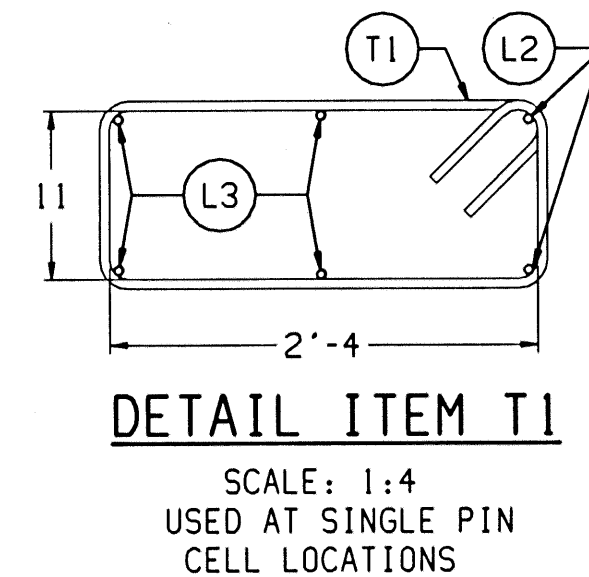
SECTION B-B
SCALE 1:20



SECTION C-C
SCALE 1:20
(TYPICAL END FOOTER)



SECTION D-D
SCALE 1:20
(TYPICAL MIDDLE FOOTER)
(SINGLE BASEPLATE)



DETAIL ITEM T1
SCALE: 1:4
USED AT SINGLE PIN
CELL LOCATIONS

REINFORCING STEEL SCHEDULE (A.S.T.M. A-615 GRADE 60)						
COLD FORM BARS TO INSIDE DIMENSIONS						
SYM	QTY	SIZE	LOCATION, DIRECTION	A	B	WGT
COMMON TO BOTH 2' & 4'	ST1	27	*4	FLOOR, LONG.	31'-0	559
	ST2	61	*4	FLOOR, LATERAL	12'-8	516
	ST3	56	*4	FOOTERS, LONG.	5'-0	187
	ST4	42	*5	FOOTERS, LATERAL	12'-8	555
	ST5	20	*5	APPROACH, LATERAL	10'-8	223
	ST6	22	*5	END WALLS, LATERAL	9'-6	218
L1	22	*5	APPROACH TO END TIES	2'-6	2'-6	115

2' ONLY	ST7	12	*4	SIDE WALLS, LONG.	30'-9	246
	T1	36	*5	(SEE DETAIL ITEM T1)	7'-4	275
	L2	204	*4	WALL TO FLOOR TIES	2'-6	749
	L3	48	*5	(SEE DETAIL ITEM T1)	1'-0	150
L4	8	*4	(CORNERS)	2'-0	6'-10	47

4' ONLY	ST7	24	*4	SIDE WALLS, LONG.	30'-9	493
	T1	60	*5	(SEE DETAIL ITEM T1)	7'-4	459
	L2	204	*4	WALL TO FLOOR TIES	2'-6	1021
	L3	48	*5	(SEE DETAIL ITEM T1)	1'-0	250
L4	16	*4	(CORNERS)	2'-0	6'-10	94

THIS DRAWING CONTAINS INFORMATION TO BUILD EITHER A 2' OR 4' NOMINAL CLEARANCE PIT FOUNDATION. CONTRACTOR MUST KNOW DESIRED DEPTH BEFORE ORDERING MATERIALS.

MATERIAL SUMMARY* & "Y" DIMENSION CHART		
NOMINAL CLEARANCE BETWEEN FLOOR AND SCALE	2'	4'
CONCRETE (CU. YDS.)	55	67
REINFORCING STEEL	3863	4713
Y1 (ELEVATION A-A)	2'-8 1/2	4'-8 1/2
Y2 MINIMUM (ELEVATION A-A)	4'-0	6'-0

* QUANTITIES GIVEN ARE FOR FOUNDATION ONLY. IF CONCRETE PLATFORMS ARE USED, REFER TO GENERAL LAYOUT DRAWING FOR DECK CONCRETE AND REINFORCING STEEL QUANTITIES & SPECS.

NOTES:

- USE MINIMUM 3000 PSI STRENGTH CONCRETE AT 28 DAYS WITH 5-7% AIR ENTRAINMENT.
- USE MINIMUM 60KSI YIELD DEFORMED REINFORCING STEEL.
- FOUNDATION REQUIRES 2000 PSF RATED SOIL.
- TOP OF CONCRETE AT BASEPLATE LOCATIONS TO BE LEVEL AND IN ONE PLANE $\pm 1/8"$.
- DIAGONAL MEASUREMENTS ENDWALL TO ENDWALL MUST BE EQUAL WITHIN $1/2"$.
- BASEPLATE ANCHORS TO BE $3/4"$ DIA. EXPANSION BOLTS X 6" LG. SUPPLIED BY TOLEDO. USE BASEPLATES AS TEMPLATES TO LOCATE EXPANSION BOLTS DURING SCALE INSTALLATION.
- RAMP LENGTH: -PER LOCAL REGULATIONS
-1/2" SLOPE PER FOOT TYPICAL
- BOTTOM OF FOOTERS MUST BE BELOW LOCAL FROSTLINE. IF LOCAL FROSTLINE IS UNKNOWN, REFER TO DRAWING TA201033 (U.S. WEATHER BUREAU FROST PENETRATION AVERAGES).
- CONTRACTOR SUPPLIES:
 - EXCAVATION
 - REINFORCING STEEL
 - CURB ANGLE ASSEMBLIES (SECT B-B)
 - CONCRETE AND FORMS
 - 1 1/2" DIA CONDUIT
 - BUMPER PLATE ASSEMBLIES (VIEWS J-J & N-N)

REV	CHANGE	BY	DATE	SCALE NOTED	DATE
A	REVISED REBAR SCHEDULE. INCREASED BASE SLAB	ALS	7-17-91	DATE 3/8/91	
B	CORRECT SECTION B-B. REVISED REBAR SCHEDULE	RMR	10/28/91	DRN RMR APPD	
C	ADDED 6" TO FOOTER AND CLR FOR FOOTER REBAR	ALS	6/23/93	TITLE 7560A/B FOUNDATION: PIT (2' OR 4' DP) 87'x111	
D	REMOVED NOTE #10 FROM NOTES	DGR	8/19/96		

UNLESS OTHERWISE SPECIFIED, ALL DIMENSIONS ARE IN INCHES, AND DIMENSIONAL TOLERANCES ARE:

FRACTIONAL	DECIMAL	ANGULAR
1/32	.XX $\pm .02$	$\pm .5^\circ$
	.XXX $\pm .005$	

THIS PRINT IS FURNISHED WITH THE UNDERSTANDING THAT THE ESSENCE THEREOF WILL NOT BE REPRODUCED IN WHOLE OR IN PART WITHOUT WRITTEN AUTHORIZATION OF METTLER-TOLEDO, INC. ALL DESIGNS ARE THE PROPERTY OF METTLER-TOLEDO, INC. AND WILL BE PROTECTED BY PATENTS.

TC201576

REV D